



# Awaz Welfare Foundation (AWF)

## Organizational Profile

2026-2027

Head Office: 464-A, Block C, Faisal Town, Lahore, Punjab, Pakistan

✉ [info@awaz.org.pk](mailto:info@awaz.org.pk)

🌐 [www.awaz.org.pk](http://www.awaz.org.pk)

☎ +92 336 4195785 | +92 321 8404411

## **ABOUT AWAZ WELFARE FOUNDATION**

Awaz Welfare Foundation (AWF) is a registered, non-profit, non-political, and non-religious organization dedicated to improving the lives of underserved and marginalized communities across Pakistan. Established in 2014, AWF has consistently worked at the grassroots level to address critical social challenges through sustainable and community-driven initiatives.

The organization focuses on key development sectors including education, healthcare, food security, orphan support, and community development services. Through its transparent operational approach and strong community engagement, AWF has built a reputation as a reliable and impactful development organization.

AWF believes that sustainable change can only be achieved through inclusive participation, accountability, and long-term commitment to community empowerment.

### **LEGAL STATUS**

- **Registered under: Registration and Control Ordinance, 1961**
  - **Year of Registration: 2014**
  - **Nature: Non-Profit Organization (NPO)**
  - **Status: Non-Political and Non-Religious**
  - **Operational Area: Punjab (Urban, Rural & Peri-Urban Communities)**
-

## **VISION**

To create an inclusive, equitable, and empowered society where all individuals have access to education, healthcare, and essential social services without discrimination.

## **MISSION**

To enhance the quality of life of marginalized communities through sustainable, transparent, and impactful interventions in education, healthcare, food security, and social welfare, while promoting dignity, equality, and community participation.

## **CORE VALUES**

- **Humanity & Compassion**  
We serve communities with empathy, dignity, and respect.
- **Transparency & Accountability**  
We maintain clear, accountable, and ethical systems in all operations.
- **Community Participation**  
We believe in engaging communities as partners in development.
- **Equity & Inclusion**  
We ensure equal opportunities for all, especially the most vulnerable.
- **Sustainability**  
We design programs that create long-term and measurable impact.

## **OPERATIONAL AREAS**

Awaz Welfare Foundation operates across Punjab with a focus on:

- Urban low-income communities
  - Rural and peri-urban areas
  - Underserved and marginalized populations
-

## THEMATIC / OPERATIONAL FIELDS

### 1. EDUCATION PROGRAM

Education is a cornerstone of AWF's development strategy. The organization works to ensure access to quality education for children from disadvantaged backgrounds.

#### Key Interventions:

- Financial assistance for deserving students
- Distribution of books, uniforms, and stationery
- School awareness and enrollment campaigns
- Capacity building of teachers and institutions

#### Impact:

1,200+ students supported

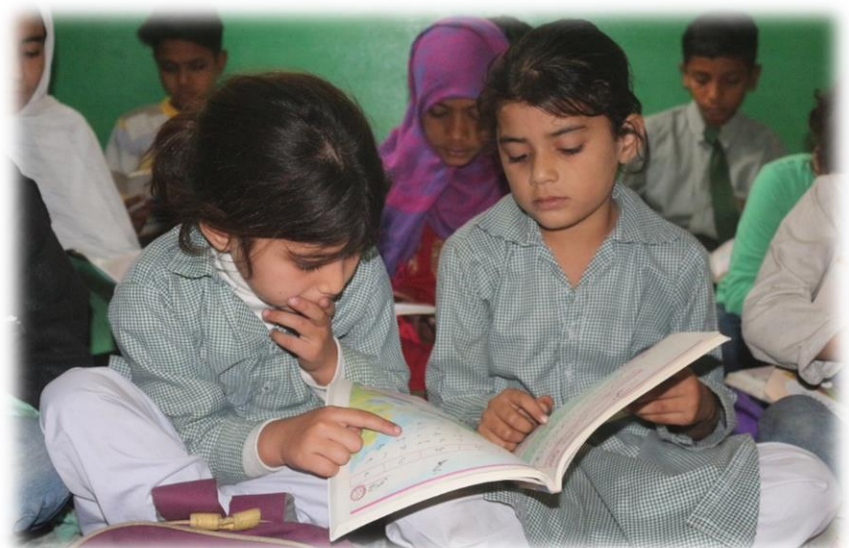
- Improved enrollment and retention rates
- Enhanced awareness among parents and communities



#### Growth Trend:

Students Supported Over Time:

- 2018: 200
- 2019: 350
- 2020: 600
- 2021: 850
- 2022: 1,200+



## 2. HEALTHCARE PROGRAM

AWF promotes preventive and primary healthcare services through community outreach and awareness programs.

### Key Activities:

- Free medical camps and outreach services
- Screening for diabetes, blood pressure, hepatitis
- Maternal and child health awareness
- Health education and referral services

### Impact:

- 2,500+ individuals benefited
- Early detection of chronic diseases
- Improved health awareness in communities

### Outreach Growth:

Medical Camps Conducted:

- 2018: 10
- 2019: 18
- 2020: 25
- 2021: 32
- 2022: 45
- 2023: 60+



### **3. FOOD SECURITY & QURBANI PROGRAM**

AWF's Food Supply and Sacrificial Meat Distribution Program is a humanitarian initiative that provides basic food items and sacrificial meat to poor, orphaned, and deserving families in an equitable manner.

Free medical camps and health outreach programs

#### **Key Activities**

##### **1. Distribution of monthly food supplies**

- Preparation of ration packages (flour, rice, lentils, oil, sugar, etc.)
- Door-to-door or distribution points of funds
- Timely distribution of the list of verified beneficiaries

##### **2. Distribution of Qurbani meat**

- Intifada of Qurbani animals on Eid-ul-Adha
  - Packing the meat in a hygienic manner
  - Reaching fresh meat to the deserving families
  - Special focus: Widows, orphans, disabled people
  - Beneficiary criteria
  - Low-income families
  - Widows or orphans
  - Disabled people
  - Daily wage earners
  - Disaster affected families
  - Operational strategy
  - Community survey or field verification
  - Transparent distribution through a network of volunteers
-

- 
- Proper record keeping and documentation
  - Local community Coordination with leaders
  - Transparency and accountability
  - A proper record of every activity is maintained.
  - Provides reports and photographs to donors.
  - Ensures financial transparency.

### **Impact**

- Hundreds of families are provided with regular food assistance.
- A sense of joy and equality on the occasion of Eid
- Community trust in me and justice of unity

### **Future plans**

- Expanding the food program to more areas
- Developing a cold storage and meat preservation system
- Digital beneficiary database created
- Partnering with international donors



#### 4. ORPHAN SUPPORT SERVICES

AWF provides comprehensive support to orphan children, particularly focusing on dignity and long-term well-being.

##### **Orphan Marriage Support Program:**

This initiative ensures that orphan girls are married with dignity and respect.

##### **Services Include:**

- Complete wedding arrangements
- Provision of essential dowry items
- Clothing and event management
- Hygienic and dignified meal arrangements

##### **Impact:**

- Restored dignity and confidence
- Strengthened social inclusion
- Provided secure and respectful future pathways



## **5. Printing Services for Educational Institutions & NGOs**

Awaz Welfare Foundation provides affordable and quality printing services to support learning and development initiatives:

- Printing of textbooks, notebooks, and educational materials
- IEC materials (brochures, posters, manuals)
- Reports, training manuals, and awareness content for NGOs
- Customized printing support for donor-funded projects

This service helps educational institutions and NGOs reduce costs while maintaining quality standards.

### **Key Activities**

- Community health camps and outreach services
- Educational support and learning material provision
- Printing and publication support for development sector
- Awareness and advocacy initiatives
- Collaboration with public and private sector partners

### **Target Beneficiaries**

- Low-income families
  - Children and youth
  - Women and elderly population
  - Educational institutions and community-based organizations
-

## PAST PROJECT HIGHLIGHTS (2017-2025)

### 1. Community Health Camps Program

**Sector:** Health

**Location:** Lahore & nearby communities, Punjab

**Duration:** Multiple short-term interventions (2018–2024)

#### Key Activities:

- Free medical check-ups for low-income families
- Screening for blood pressure, diabetes, and common illnesses
- Distribution of essential medicines
- Health awareness and counselling sessions

#### Key Achievements:

- 2,500+ individuals benefited
- Early detection of chronic diseases
- Strong community participation and trust building



---

## 2. Educational Support & Learning Material Distribution

**Sector:** Education

**Location:** Urban low-income and peri-urban areas of Punjab

**Target Group:** School-going children from disadvantaged families

### Key Activities:

- Distribution of notebooks, stationery, and learning materials
- Support to low-cost private and community schools
- Awareness sessions for parents on importance of education

### Key Achievements:

- 1,200+ students supported
- Improved school attendance and learning continuity
- Strengthened engagement with parents and teachers



### **3. Printing & Publication Support for Educational Institutions and NGOs**

**Sector:** Education Support Services

**Location:** Punjab

**Key Activities:**

- Printing of textbooks, notebooks, training manuals, and IEC material
- Cost-effective printing support to schools and NGOs
- Production of reports, brochures, posters, and awareness materials

**Key Achievements:**

- Supported 20+ educational institutions and NGOs
- Reduced printing costs for development sector partners
- Ensured timely availability of quality educational content

### **4. Health Awareness & Preventive Education Sessions**

**Sector:** Health & Community Awareness

**Focus Areas:** Hygiene, nutrition, maternal and child health

**Key Activities:**

- Community-based awareness sessions
- Distribution of IEC materials
- Engagement with women and caregivers

**Key Achievements:**

- Improved health-seeking behavior
  - Increased awareness of preventive healthcare practices
  - Positive feedback from community members
-

## Overall Impact (2017–2024)

- 4,000+ direct beneficiaries
- Strong community-level presence
- Proven implementation capacity
- Transparent and accountable operations

## ORGANIZATIONAL STRUCTURE

### LIST OF BOARD MEMBERS

Sr. #	Name	Designation
1	Mr. Iftikhar	Petron
2	Ms. Saima Saleem	Chairperson
3	Muhammad Khurram Shahzad	General Secretary
4	Ms. Irum Farheen	Joint Secretary
5	Mr. Shahid Iqbal	Secretary Communication
6	Ms. Samina Iqbal	Secretary Legal
7	Ms. Aleena Saleem	Secretary Finance
8	Ms. Asia Sultana	Executive Member
9	Ms. Mehak Aslam	Executive Member

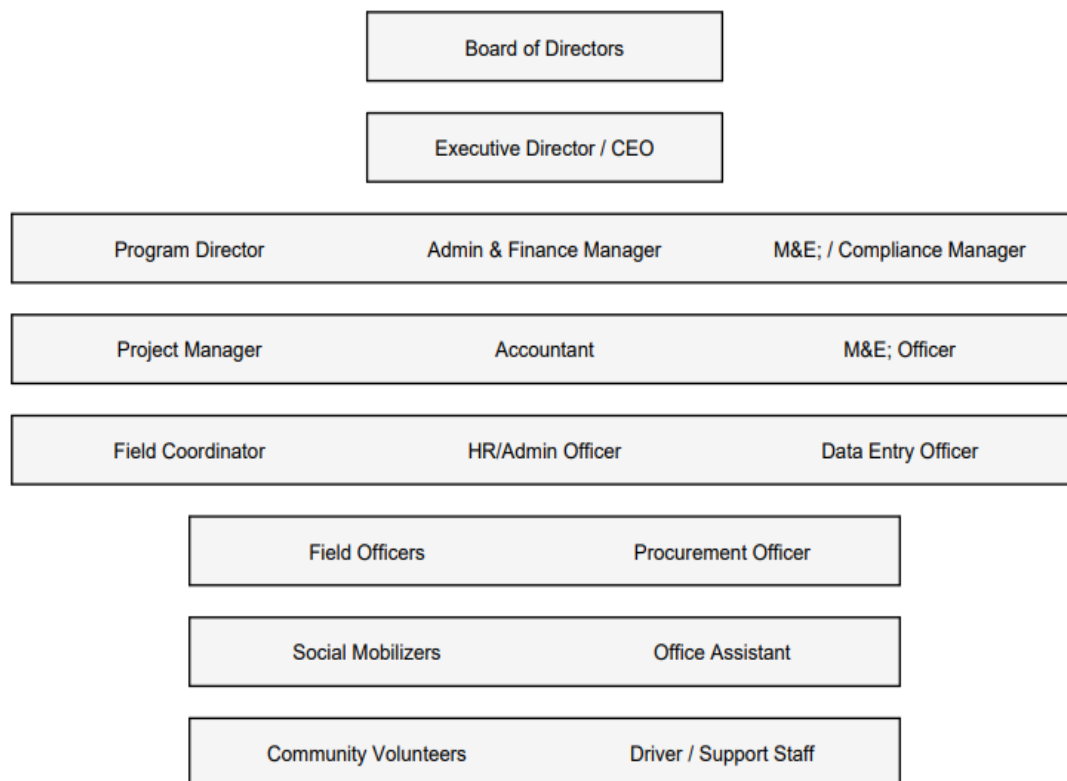
### PROGRAM MANAGEMENT TEAM

- Ms. Saima Saleem
- Muhammad Khurram Shahzad
- Ms. Samina Latif
- Ms. Irum Faheem
- Muhammad Faisal
- Ms. Bushra Bibi
- Ms. Samina Iqbal

## VOLUNTEERS

- Amjad Baig (Donor for Health Services)
- Khalid Javed Bajwa (Donor for Orphan Marriages)
- SEWA Foods (Donor for Health Services)

### *(Organogram)*



## GOVERNANCE & ACCOUNTABILITY

- Regular board oversight
- Transparent financial management
- Activity and financial reporting
- Compliance with national laws and donor requirements

## **MONITORING & REPORTING**

- Activity-based monitoring systems
- Beneficiary records and documentation
- Periodic progress and financial reports
- Donor visibility and compliance

## **PARTNERSHIP & COLLABORATION**

Awaz Welfare Foundation collaborates with:

- Muslim Hands International
- Sudhar Development Foundation
- Social Organization for Human Development (SOACH)
- Health, Education and Literacy Program (HELP)
- Population Council (PC)
- Local communities and institutions
- Rural Level Educational Institutions
- CBOs and civil society organizations
- Government departments
- Corporate, International and Individual donors

## **FUTURE DIRECTION**

The organization aims to scale up its MDGs: Eradicate extreme poverty and hunger, Achieve universal primary education, Promote gender equality and empower women, Combat HIV/AIDS, malaria, and other diseases, Support individuals in Major Medication, Develop a global Partnership for Development, Strengthening partnerships with

---

international donors, and expand outreach services to under-served districts in Pakistan.

## **CONCLUSION**

Since its registration in 2017, **Awaz Welfare Foundation** has remained committed to social development through education, health, and support services. With a strong community presence and a transparent operational approach, the organization is well-positioned to implement impactful, donor-supported programs.

## **MESSAGE FROM THE CEO**

On behalf of **Awaz Welfare Foundation**, I am pleased to present our organizational profile and share our commitment to social development in Pakistan.

Since our registration in **13 September 2014**, Awaz Welfare Foundation has been dedicated to serving underprivileged and marginalized communities with a strong focus on **Education, Health, Women Empowerment and Community Support Services**. We firmly believe that sustainable development begins with access to quality education, basic healthcare, and informed communities.

Our approach is rooted in **transparency, community participation, and accountability**. We work closely with local communities, educational institutions, and development partners to design and implement programs that respond to real needs and deliver measurable impact. Over the years, our initiatives have positively affected the lives of

---

---

thousands of individuals, particularly women, children, and low-income families.

---

As we move forward, Awaz Welfare Foundation aims to expand its outreach and strengthen partnerships with national and international donors, including organizations in the **World**, to scale up impactful programs that improve health outcomes and educational opportunities.

We remain committed to upholding the highest ethical standards and ensuring that donor support translates into meaningful and lasting change for communities in need.

**WISH WE ALL THE BEST.**

